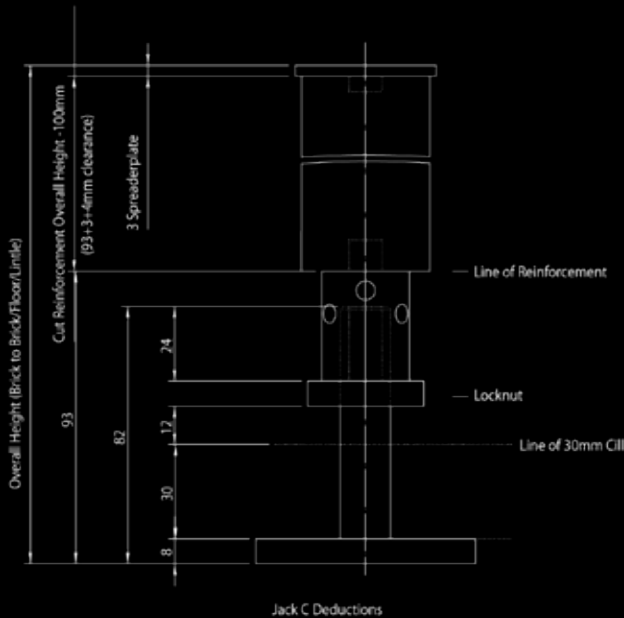


POLEHEIGHT DEDUCTIONS

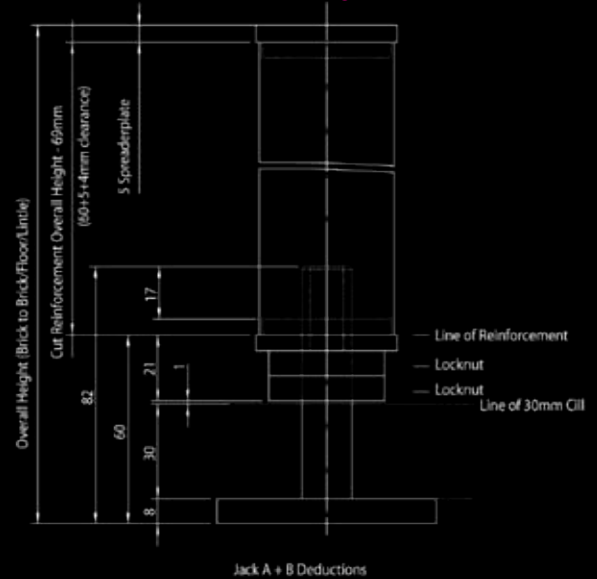


Use this page to determine the height of your Baypole taking in to account the sizes of Baypole jacks and spreader plates. It is quite simple, cross reference your pole with the relevant drawing and your deduction is shown in pink. Note that these drawings are based on our most common 8mm thick Baypole Jack base and a 30mm cill height. You can easily adjust the deduction based on your bespoke application. Eg. A 3mm thick Baypole Jack base would require a 5mm reduction from the example shown.

Use for 482054, 482024, 482025, 482044, WWL121, 482055
 Cut Reinforcement at Overall Height - 100mm



Use for 482033, 482034, 482026, 482027, 482031, 482136, WWSJC75, 482106, 482135
 Cut Reinforcement at Overall Height - 69mm



Use for VS90, VSBAYPOLE01/02, WWL122, WWL123, Easybays
 Cut Reinforcement at Overall Height - 66mm

